



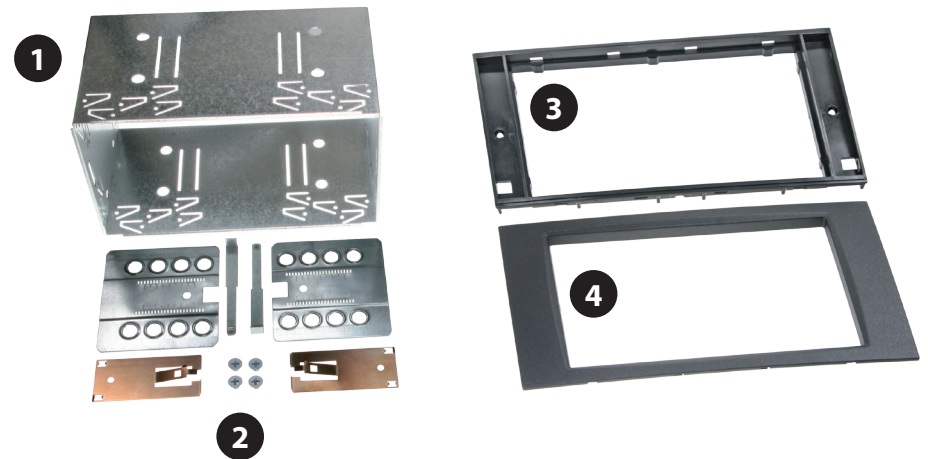
Installation Manual Double DIN Kit

Ford Fiesta 11/2005 →
Ford Focus 01/2005 →
Ford Focus C-MAX 01/2005 →
Ford Fusion 11/2005 →

Ford Galaxy 2006 →
Ford S-MAX 2006 →
Ford Transit 2006 →

Colour	Part-No.: Standard	Part-No.: Rubber-Touch
black	381114-15-1	391114-15-1
anthracite	381114-15-2	391114-15-2
silver	381114-15-3	391114-15-3

Compatible with double DIN Navigation



Double DIN Set contents

- (1) Metal Frame
- (2) Installation Kit
- (3) Mounting Frame
- (4) Facia Plate

Ford models with oval shaped 6000CD audio system



Oval shaped Ford 6000CD system

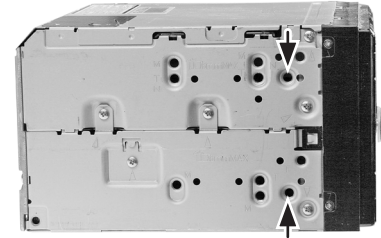
If the car was delivered with an oval shaped audio system an other facia plate is required:

2-DIN black: 381114-19-1

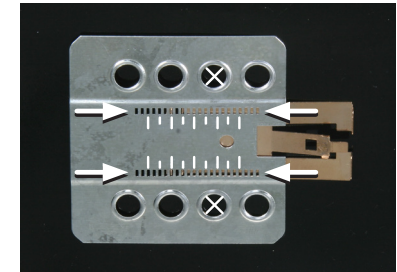
2 DIN silver: 381114-19-2

1-DIN black: 281114-16

1-DIN silver: 281114-17



(sample photo)

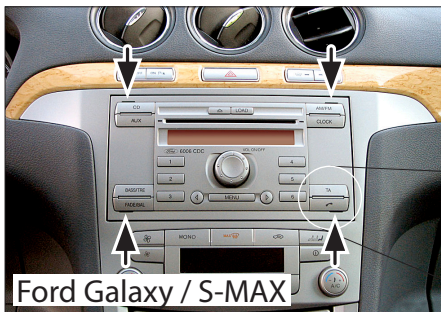


(sample photo)

Mount the metal brackets to the double DIN head unit.

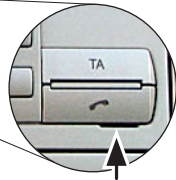
The position of the copper coloured holder can be adjusted to your needs for perfect fit. (see sample)

Ford with other audio systems



Ford Galaxy / S-MAX

1. Insert Ford radio release keys in the holes of the OEM head unit. Remove OEM head unit by pulling it towards your direction.



Ford Focus



Ford Fiesta



2. Place the facia plate on the dashboard.

Push the metal frame into the facia plate.

Connect all required circuit points and push the double DIN head unit until it snaps in.

Place the trim frame.

Reinstall everything in reverse order to finish installation.

All installation work must be performed by a qualified professional installer only. The manufacturer / dealer is not liable for any kind of incidental or indirect damages.