



**CT23MB23**

## Double DIN Fitting Kit for Mercedes Vehicles



### IN THE KIT

- Double DIN Fascia Panel
- Radio Brackets
- Screws (x4)
- Hazard Button Mounting Bracket
- Hazard Button Top Panel
- Hazard Button Extension Wiring

### APPLICATION

*Note: Application data is subject to change at any time*

Mercedes A-Class (W176)	2013 - 2018
Mercedes CLA (not Shooting Brake)	2015 - 2019
Mercedes GLA	2015 - 2020

### FEATURES

- Allows for the installation of a double DIN aftermarket stereo
- Includes mounting brackets and accessories
- Finished in black to match vehicle dashboard
- Includes components for re-routing the hazard switch button(s)

#### DISCLAIMER

*The information provided in this document is subject to change without notice due to manufacturer changes and/or improvements to the product/s. This instruction manual is based on documented data and research. The manufacturer of this product cannot be held responsible for any changes made to the vehicle by the manufacturer or damages that may occur through the installation of this product in accordance with the steps outlined herein.*

# PRIOR TO INSTALLATION

Read the manual prior to installation. Technical knowledge is necessary for installation. The place of installation must be free of moisture and away from heat sources. Please ensure that the correct tools are used during the installation to avoid damage to the vehicle or product. **Connects2 can not be held responsible for the installation of this product.**

## INSTALLATION GUIDE

### DASH DISASSEMBLY

1.



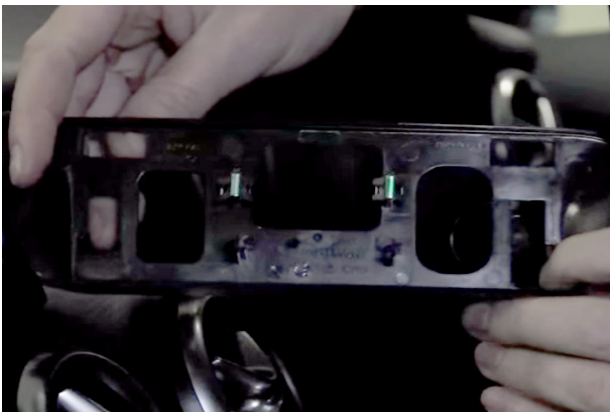
Begin by removing the screws (x2) located behind the top display. Once done, firmly pull the display forward and up from the dashboard.

2.



Disconnect both the connections located on the back of the top display.

3.



Using a panel removal tool, pry away the top display mounting bracket and fully remove this from the dashboard.

4.



Remove the screws (x2) that hold the main display bracket in place and remove it completely. These top display components can now be stored as they will no longer be needed.

# INSTALLATION GUIDE

---

## DASH DISASSEMBLY

---

5.



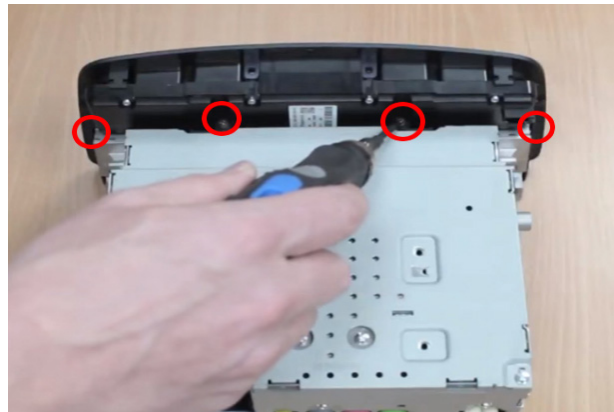
Remove both left & right vents from the dashboard. Undo the screws (x2) that are uncovered by these vents, these screws hold the main head unit in place.

6.



With the screws removed, proceed to pull the main head unit out of the dashboard and remove all of the wiring in the process.

7.

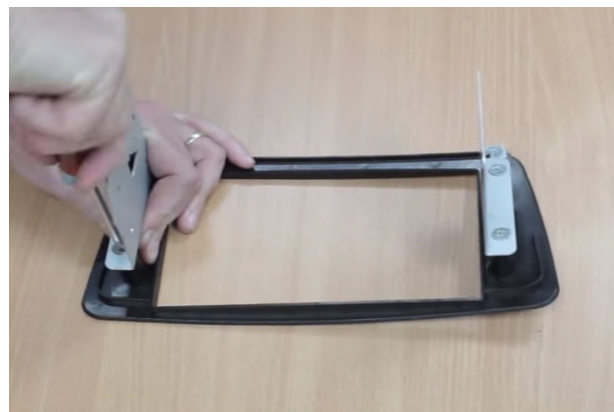


Before putting the main head unit into storage, undo the screws highlighted (x4). This will separate the hazard switch panel which will be used later in the installation (including the screws).

## KIT ASSEMBLY

---

8.



Take the brackets & screws that come within the kit and attach them to either side of the new double din fascia.

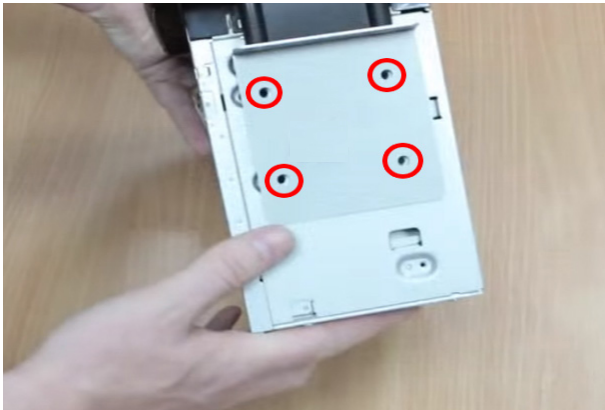
# INSTALLATION GUIDE

---

## KIT ASSEMBLY

---

9.



Take the fascia (with brackets attached) and slide this over the new stereo. Align the unit correctly and screw into place (screws not included).

## DASH ASSEMBLY

---

10.



Attach the 'hazard button extension wiring' to the pre-existing connection. Once done, thread this up through the top display port.

With the wiring in place, take the 'hazard button mounting bracket' and screw this onto the dashboard using the pre-existing screws.

11.



With the mounting bracket attached, grab the hazard switch button panel and proceed to connect to the 'extension wiring'.

Then proceed to attach the panel to the 'mounting bracket' by using the screws removed in *Step 7*. Finish the assembly of the button panel by clipping on the 'hazard button top panel'.

12.



Proceed to connect up the new stereo and slide into the dashboard. Replace the air vents to complete the installation.