

## Step 1 Safety First!

Always disconnect the vehicle's battery before working on any electronic components. Handle all electrical parts with care to avoid damage.



## Step 2 Relay Unit Placement

Position the relay unit in the engine bay on the left side, ensuring the correct orientation. Secure the relay firmly to prevent movement or vibration during vehicle operation. Ensure the relay is properly mounted in its socket.

## Step 4 Electrical Connections on harness

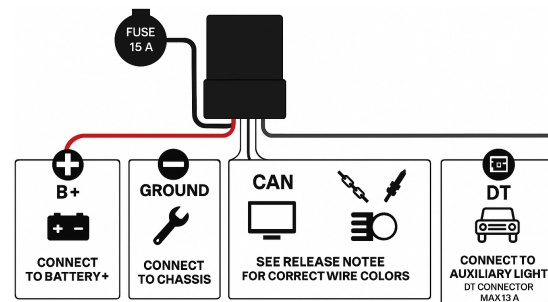
**Red** - Connect to the vehicle's battery positive terminal (+12V)

**Black** - Connect to the vehicle's ground (battery negative Terminal)

**Can LO** - Connect to the vehicle's CAN High (CAN-LI)

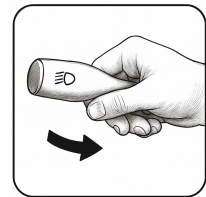
**Can HI** - Connect to the vehicle's CAN Low (CAN-H)

**DT 2 pin** - Connect to the newly installed auxiliary lights.



## Step 5 Calibration

1. Start the vehicle.
2. Set the headlight switch to "Auto".
3. Pull the high beam lever and hold it. After approximately 6 seconds, the newly installed auxiliary lights will blink three times, indicating successful calibration.



**Note:** Calibration is required for the relay module to function properly with the vehicle's adaptive headlight system.

## Pin explanation of Canbus-relay

**Pin 1:** Deactivate the module (12v + in) ((optional))

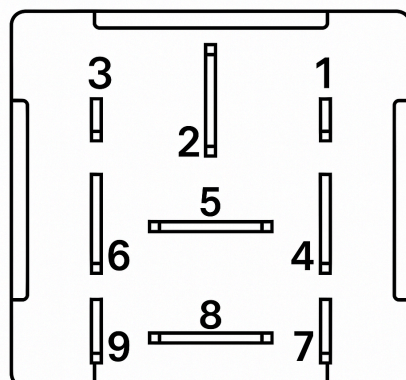
**Pin 2:** Supply Voltage (12v + )

**Pin 6:** Mass/Ground ( - )

**Pin 7:** Can HI

**Pin 8:** Output (12v +)

**Pin 9:** CAN LO



## Configuration Command

1. Deactivate the high beams and wait for a minimum of 5 seconds.
2. Perform 10 rapid blinks (0.5 seconds per blink) within a 5-second timeframe.
3. Wait for the auxiliary lights to activate after 1 second.
4. Execute the specified blinking sequence (as detailed in the adjacent instructions) within 5 seconds of the auxiliary lights turning on.
5. Wait for the auxiliary lights to deactivate.
6. Immediately perform 10 rapid blinks (0.5 seconds per blink) within a 5-second window.
7. The auxiliary lights will blink to confirm the selected configuration.
8. The configuration process is now complete.

Function	Status	Number of Blinks
High Beam (HB)	Activated/Deactivated	1
Auto Filter	Activated/Deactivated	2
Auto Delay	Activated/Deactivated	3

